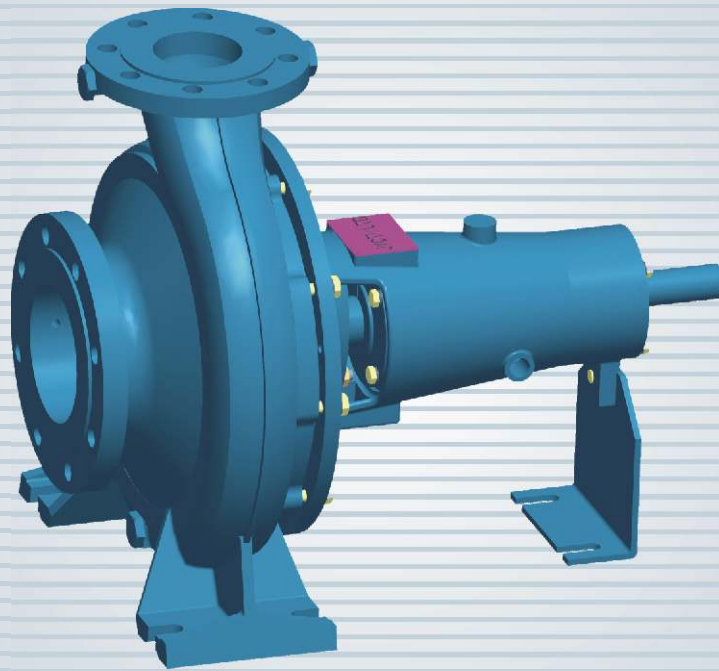




Jyoti Ltd.

Water • Power • Progress

'Jyoti' End Suction Pump New Series : JES



ISO 9001:2015 || TUV INDIA



Ideally suitable in circulating system in
Industry, Irrigation, Sprinklers system,
Fire fighting, Air conditioning etc.

APPLICATIONS

For Pumping clear or turbid water upto 3000 ppm. Ideally suitable in circulating system in industry, irrigation, sprinklers system, booster service, fire fighting, air conditioning, pumping brine, alkaline solution, oils, benzene etc. for liquids having temperature in the range of -10°C to 105°C and pressure upto 16 bar.

CONSTRUCTION FEATURES BASED ON ANSI/HI 1.3

Pumps are single stage, end suction and vertical discharge, radially split back pull - out type. They are made in accordance with ISO:2858, ISO:5199 AND DIN 2533/16 bar.

CASING

High efficiency volute type, suction and discharge nozzles as well as the supporting feet are cast integral with casing.

SHAFT

Four shaft units cover complete range of JES pumps, made of high tensile steel and accurately ground.

IMPELLER

Closed type and accurately balanced dynamically. Hydraulically balanced by back vanes and for large impellers by balancing holes.

STUFFING BOX

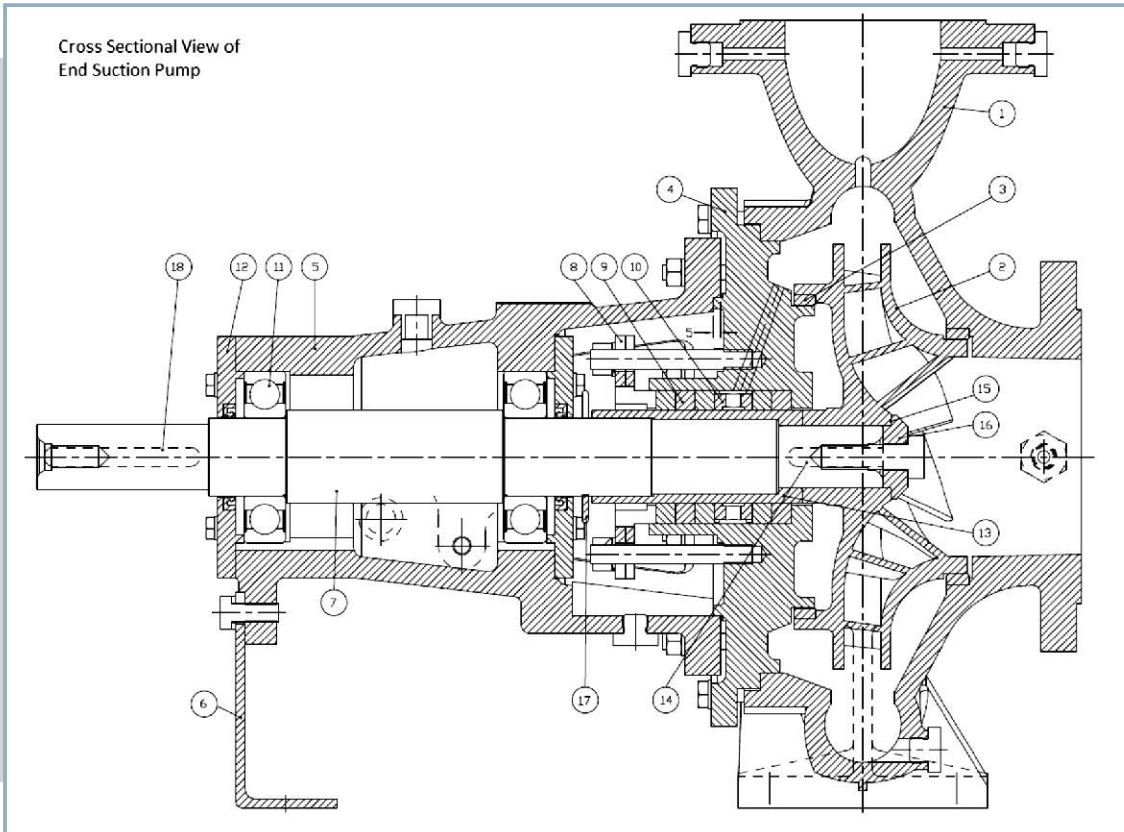
Available with suitable gland packing or mechanical seal.

DIRECTION OR ROTATION

Clockwise, when seen from driver end.

MATERIALS OF CONSTRUCTION

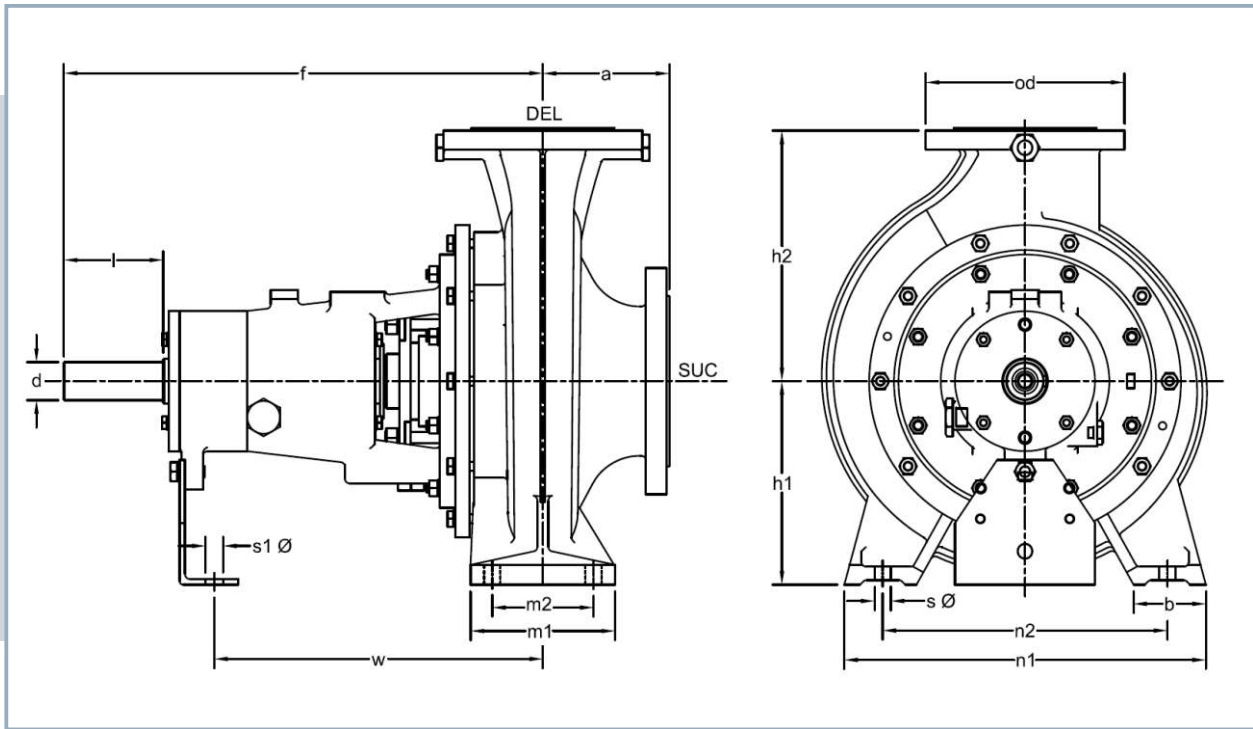
Casing	:	Cast Iron, Cast Steel
Impeller	:	Cast Iron, Bronze, Stainless Steel
Wear Ring	:	Cast Iron, Bronze
Shaft	:	Stainless Steel
Shaft Sleeve	:	Cast Iron, Bronze, Stainless Steel
Lantern Ring	:	Cast Iron
Gland	:	Cast Iron



Interchangeability of Jyoti JES Pump Components

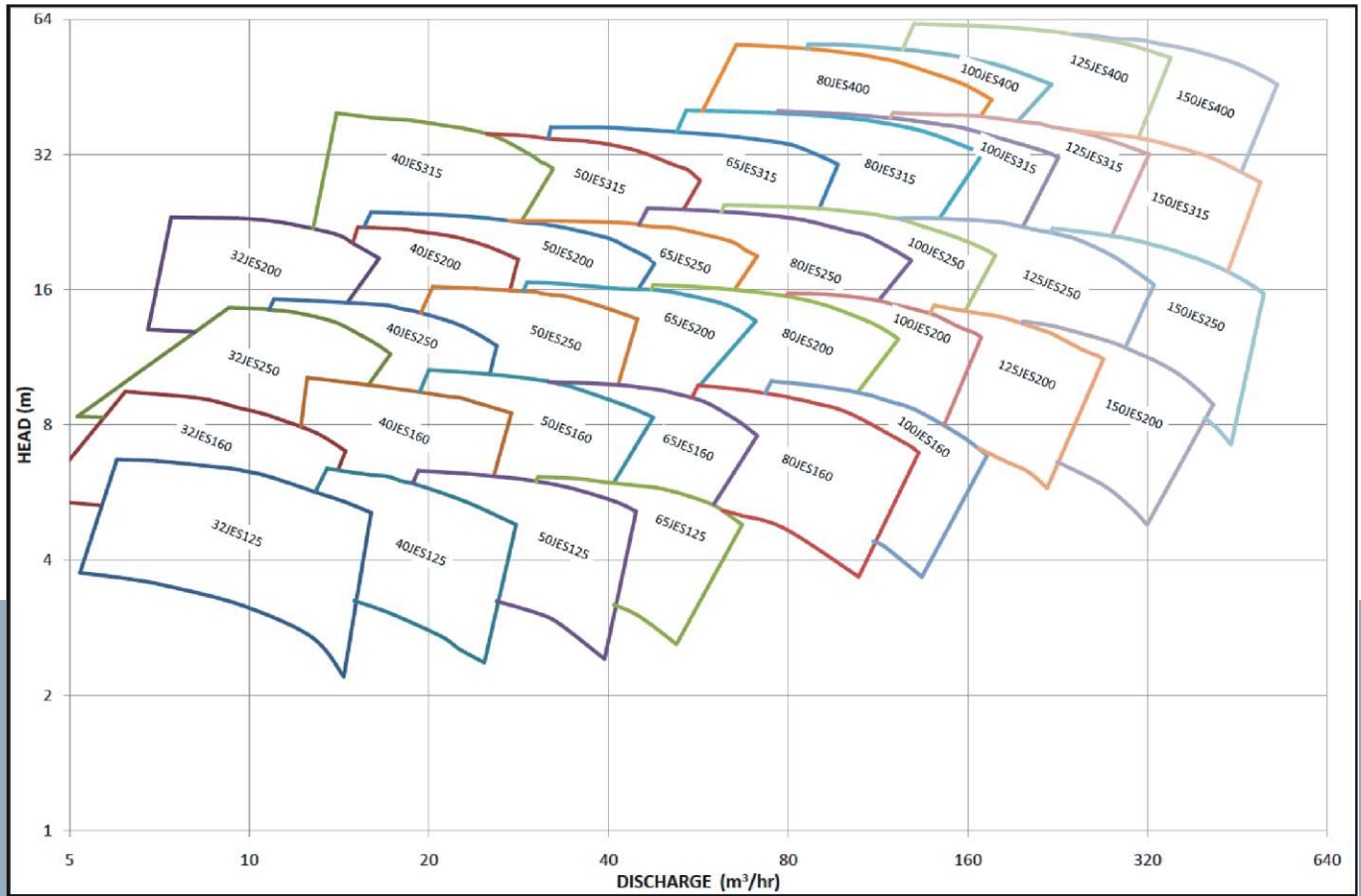
Part No.	Name of Part	Total No. of Parts	PUMP MODELS																																					
			32JES125	32JES160	32JES200	40JES125	40JES160	40JES200	50JES125	50JES160	50JES200	65JES125	32JES250	40JES250	40JES315	50JES250	50JES315	65JES160	65JES200	65JES250	80JES160	80JES200	80JES250	100JES160	100JES200	65JES315	80JES315	80JES400	100JES250	100JES315	100JES400	125JES200	125JES250	125JES315	125JES400	150JES200	150JES250	150JES315	150JES400	
			A30								A40								A50								A60													
1	Casing	37	1	2	3	4	5	6	7	8	9	10	11	12	13	14	15	16	17	18	19	20	21	22	23	24	25	26	27	28	29	30	31	32	33	34	35	36	37	
2	Impeller	37	1	2	3	4	5	6	7	8	9	10	11	12	13	14	15	16	17	18	19	20	21	22	23	24	25	26	27	28	29	30	31	32	33	34	35	36	37	
3	Casing Ring	23	1	2	1	3	4	1	5	5	5	6	7	7	8	7	8	9	9	10	11	12	13	14	15	6	15	13	14	16	17	18	19	20	19	21	22	23	23	
4	Stuffing Box	16	1	2	3	1	2	3	1	2	3	1	4	4	5	4	5	6	7	8	9	10	8	10	10	11	11	11	12	13	11	12	14	13	11	12	14	13	15	16
5	Brg. Bracket	4	1								2								3								4													
6	Support Foot	12	1	2	3	1	2	3	2	3	3	3	4	4	5	4	6	7	4	5	4	4	6	5	5	8	9	10	8	9	10	9	9	10	11	10	10	12	12	
7	Shaft	4	1								2								3								4													
8	Gland	4	1								2								3								4													
9	Gland Packing	4	1								2								3								4													
10	Lantern Ring	4	1								2								3								4													
11	Bearing	4	1								2								3								4													
12	Bearing Cover	4	1								2								3								4													
13	Shaft Sleeve	4	1								2								3								4													
14	Impeller Key	4	1								2								3								4													
15	Lock Washer	4	1								2								3								4													
16	Impeller Bolt	3	1								2								3								4													
17	Water Deflector	4	1								2								3								4													
18	Coupling Key	4	1								2								3								4													

GENERAL DIMENSIONS / MOUNTING DETAILS OF END SUCTION PUMP



Pump Model	SUC.	DEL.	PUMP MOUNTING DIMENSIONS																			kg
			a	f	h1	h2	b	c	m1	m2	n1	n2	sφ	e1	s1φ	w	d	l	t	u	y	
32JES125	50	32	80	385	112	140	50	15	100	70	190	140	14	100	14	285	24	50	27	8	100	29
32JES160	50	32	80	385	132	160	50	15	100	70	240	190	14	100	14	285	24	50	27	8	100	39
32JES200	50	32	80	385	160	180	50	15	100	70	240	190	14	100	14	285	24	50	27	8	100	44
32JES250	50	32	100	500	180	225	65	18	125	95	320	250	14	130	14	370	32	80	35	8	100	70
40JES125	65	40	80	385	112	140	50	14	100	70	210	160	14	100	14	285	24	50	27	8	100	33
40JES160	65	40	80	385	132	160	50	15	100	70	240	190	14	100	14	285	24	50	27	8	100	39
40JES200	65	40	100	385	160	180	50	15	100	70	265	212	14	100	14	285	24	50	27	8	100	46
40JES250	65	40	100	500	180	225	65	18	125	95	320	250	14	130	14	370	32	80	35	8	100	68
40JES315	65	40	125	500	200	250	65	18	125	95	345	280	14	130	14	370	32	80	35	12	100	88
50JES125	80	50	100	385	132	160	50	13	100	70	240	190	14	100	14	285	24	50	27	8	100	37
50JES160	80	50	100	385	160	180	50	15	100	70	265	212	14	100	14	285	24	50	27	8	100	44
50JES200	80	50	100	385	160	200	50	15	100	70	265	212	14	100	14	285	24	50	27	8	100	53
50JES250	80	50	125	500	180	225	65	18	125	95	320	250	14	130	14	370	32	80	35	8	100	72
50JES315	80	50	125	500	225	280	65	18	125	95	345	280	14	130	14	370	32	80	35	12	100	85
65JES125	100	65	100	385	160	180	65	17	125	95	280	212	14	100	14	285	24	50	27	8	100	46
65JES160	100	65	100	500	160	200	65	18	125	95	280	212	14	130	14	370	32	80	35	8	100	60
65JES200	100	65	100	500	180	225	65	18	125	95	320	250	14	130	14	370	32	80	35	8	100	70
65JES250	100	65	125	500	200	250	80	19	160	120	360	280	18	130	14	370	32	80	35	12	100	89
65JES315	100	65	125	530	225	280	80	19	160	120	400	315	18	160	14	370	42	110	45	12	140	136
80JES160	125	80	125	500	180	225	65	18	125	95	320	250	14	130	14	370	32	80	35	8	140	78
80JES200	125	80	125	500	180	250	65	18	125	95	345	280	14	130	14	370	32	80	35	8	140	83
80JES250	125	80	125	500	225	280	80	19	160	120	400	315	18	130	14	370	32	80	35	12	140	97
80JES315	125	80	125	530	250	315	80	19	160	120	400	315	18	160	14	370	42	110	45	12	140	144
80JES400	125	80	125	530	280	355	80	19	160	120	435	355	18	130	14	370	42	110	45	12	140	176
100JES160	125	100	125	500	200	280	80	19	160	120	360	280	18	130	14	370	32	80	35	12	140	89
100JES200	125	100	125	500	200	280	80	18	160	120	360	280	18	130	14	370	32	80	35	12	140	88
100JES250	125	100	140	530	225	280	80	20	160	120	400	315	18	160	14	370	42	100	45	12	140	119
100JES315	125	100	140	530	250	315	80	18	160	120	400	315	18	160	14	370	42	110	45	12	140	151
100JES400	125	100	140	530	280	355	100	20	200	150	500	400	22	160	14	370	42	110	45	12	140	185
125JES200	150	125	140	530	250	315	80	20	160	120	400	315	18	160	14	370	42	110	45	12	140	124
125JES250	150	125	140	530	250	355	80	18	160	120	400	315	18	160	14	370	42	110	45	12	140	138
125JES315	150	125	140	530	280	355	100	20	200	150	500	400	22	160	14	370	42	110	45	12	140	174
125JES400	150	125	140	530	315	400	100	20	200	150	500	400	22	160	14	370	42	110	45	12	140	207
150JES200	200	150	160	530	280	400	100	20	200	150	550	450	22	160	14	370	42	110	45	12	180	159
150JES250	200	150	160	530	280	375	100	20	200	150	500	400	22	160	14	370	42	110	45	12	180	153
150JES315	200	150	160	670	315	400	100	20	200	150	550	450	22	170	20	500	48	110	51	15	180	234
150JES400	200	150	160	670	315	450	100	20	200	150	550	450	22	170	20	500	48	110	51	15	180	272

FAMILY CURVE OF JYOTI END SUCTION PUMPS



Jyoti Ltd.
Water • Power • Progress

VADODARA (INDIA)

FOR FURTHER ENQUIRIES
PLEASE CONTACT

BRANCH
OFFICES

PUMP DIVISION

Nanubhai Amin Marg, Industrial Area,
P.O. Chemicals Industries,
Vadodara-390 003 (India).
Phones : +91-265-3054444
Fax : +91-265-2281871
2280671
E-mail : pumps@jyoti.com
Website : www.jyoti.com

- Bangalore** : 35/3, 2nd Floor, Novelty Mansion, 2nd Cross, IV Block, Kumarapark West, Bangalore-560 020. Telefax : 080-23562248 E-mail : bangalore@jyoti.com
- Chennai** : VEE DEE YEM Complex, 1st Floor, 270, Lloyds Road, Royapettah, Chennai 600014, Ph. : 044-28131754, Fax : 044-28133178, E-mail : chennai@jyoti.com
- Indore** : E-mail : indore@jyoti.com (Resident Representative (M) 09303211776)
- Kolkata** : 45, Jhowtalla Road, Syed Amir Ali Avenue, Kolkata-700 019, Ph. : 033-22902056, Fax : 033-22875267, E-mail : kolkata@jyoti.com
- Mumbai** : Narsinh Sadan, Flat No. 102, 1st Floor, 1st Road, Golibar, Santacruz (East), Mumbai-400 055. Ph. : 022-26134403 (D), 26122848, E-mail : mumbai@jyoti.com
- New Delhi** : 7, Jantar Mantar Road, New Delhi-110 001. Ph. : 011-23340576, E-mail : delhi@jyoti.com
- Secundrabad** : 5-4-187/7, 1st Floor, Karbala Maidan, M. G. Road, Secundarabad-500 003. Ph. : 040-27544587 (D), 2754708 Fax : 040-27543673, E-mail : jyotisecc@jyoti.com

In keeping with the technological strides the world is making in the engineering field, we introduce changes in the design of our products. Hence, the products as actually supplied might have features varying here from.
The word 'Jyoti' and 'Jyoti' logo are the registered trademarks of Jyoti Ltd. Vadodara.