

RE-600

GENERAL PURPOSE MINIATURE AUXILIARY RELAY

- High Performance
- Dust Protected
- Compact
- Slim Design
- Arc Barrier Provision
- High Reliability

Specification:

Coil Voltages

Operating range

Coil Burden

Operating Time / Release Time

Contact Arrangement

Contact Material

Contact Rating

Maximum continuous Current at 250VAC/24 VDC

Maximum switching current

Maximum power rating

Electrical Endurance

Mechanical Endurance

Contact Resistance (Initially)

Insulation Resistance

Dielectric Strength

Weight

Ambient Temperature

DC: 12, 24, 30, 48 & 110 V

AC: 110, 230 & 240 V, 50 Hz

80% to 110% of the rated voltage

DC: 0.9 W (Approx)

AC: 1.5 VA (Approx)

20 ms / 20 ms

2 Change Over

Silver & its Alloy

Rated Voltage: 230 V AC/ 24 V DC

5A @ 250V AC /5A @ 24V DC /0.25A @ 220V DC

5A

1250 VA & 120 WATT

100000 operation

10000000 operation

30 mΩ

100 MΩ at 500V DC

Between all terminals & Ground : 2 KV

Between open contacts : 1 KV

35 gm (Approx)

-40 to +70 °C



RE - 600

Optimum Uses:

Control Panels, Automation, PLC I/P & O/P telecommunication, Industrial control circuits

Socket Type:

- PYF 14.5 A (2C)
- PCB mount base would also be available.

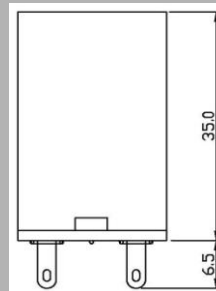
How to Order:

- RE-600, Coil Voltage, AC/DC.

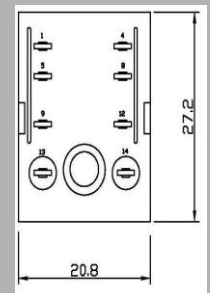
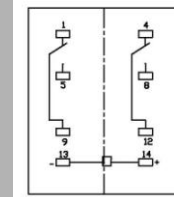
Optional:-

- 1) LED
- 2) Free-Wheeling Diode
- 3) Test Lever

Dimension:



Circuit Layuot



***All dimensions are in mm.**

In keeping with the technological strides the world is making in the engineering field, we introduce changes in the design of our products. Hence the products as actually supplied might have features varying here from.